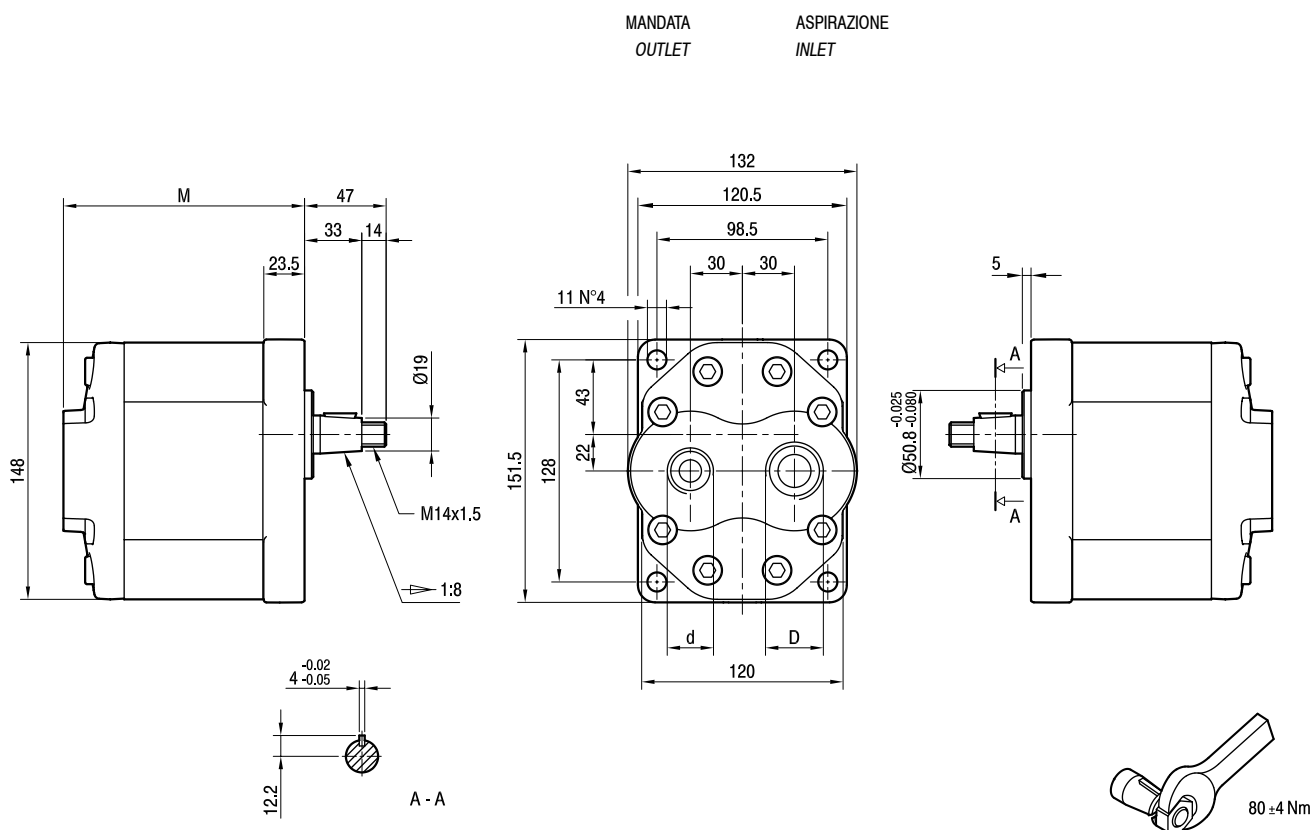


ALP3-FG-KA

Parti accessorie a corredo della pompa standard: linguetta a disco (codice 522058), dado M14x1.5 (codice 523017), rosetta elastica spaccata (codice 523006).

Accessories supplied with the standard pump: woodruff key (code 522058), M14x1.5 hexagonal nut (code 523017), washer (code 523006).



TIPO TYPE	CILINDRATA DISPLACEMENT	PORTATA a 1500 giri/min FLOW at 1500 rev/min	PRESSIONI MASSIME MAX PRESSURE			VELOCITÀ MASSIMA MAX SPEED	DIMENSIONI DIMENSIONS		
			P ₁	P ₂	P ₃		M	d	D
	cm ³ /giro [cm ³ /rev]	litri/min [litres/min]	bar	bar	bar	giri/min [rpm]	mm		
ALP3-D-30-FG-KA	20	29	230	250	270	3500	139	G3/4	G3/4
ALP3-D-33-FG-KA	22	31	230	250	270	3500	140	G3/4	G3/4
ALP3-D-40-FG-KA	26	37	230	250	270	3000	143	G3/4	G1
ALP3-D-50-FG-KA	33	48	230	250	270	3000	148	G3/4	G1
ALP3-D-60-FG-KA	39	56	220	240	260	3000	152	G3/4	G1
ALP3-D-66-FG-KA	44	62	210	230	250	2800	155	G1	G1 1/4
ALP3-D-80-FG-KA	52	74	200	215	230	2400	161	G1	G1 1/4
ALP3-D-94-FG-KA	61	87	190	205	220	2400	167	G1	G1 1/4
ALP3-D-110-FG-KA	71	101	170	185	200	2500	174	G1 1/4	G1 1/2
ALP3-D-120-FG-KA	78	112	160	175	190	2300	179	G1 1/4	G1 1/2
ALP3-D-135-FG-KA	87	124	140	155	170	2000	185	G1 1/4	G1 1/2