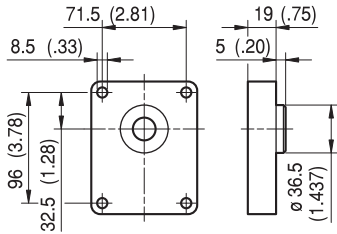
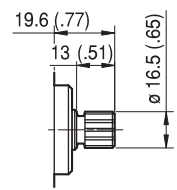
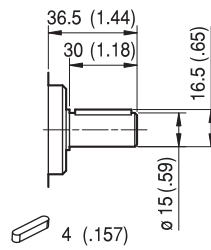
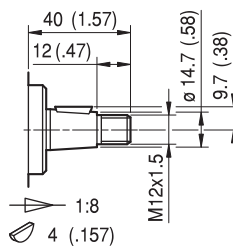


ALM2

FLANGE / FLANGES



ALBERI / SHAFTS

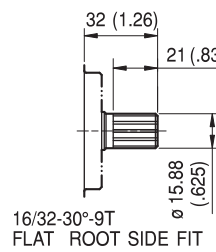
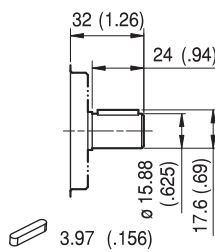
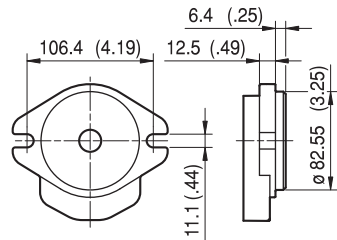

TO

 Coppia Max
 Max Torque 145 Nm

CO

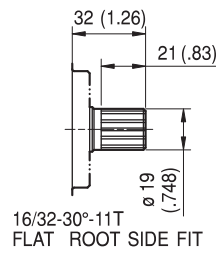
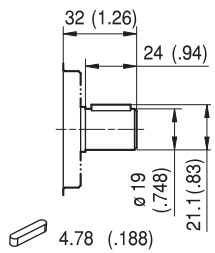
 Coppia Max
 Max Torque 125 Nm

SO

 Coppia Max
 Max Torque 130 Nm

C1

 Coppia Max
 Max Torque 105 Nm

S1

 Coppia Max
 Max Torque 110 Nm

C2

 Coppia Max
 Max Torque 150 Nm

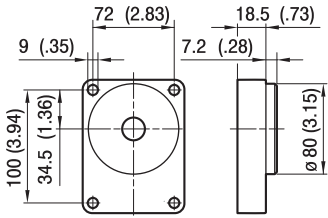
S2

 Coppia Max
 Max Torque 230 Nm

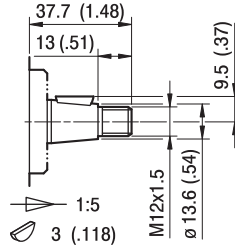
ALM2

FLANGE / FLANGES

ALBERI / SHAFTS

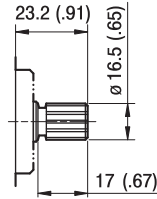


BK1



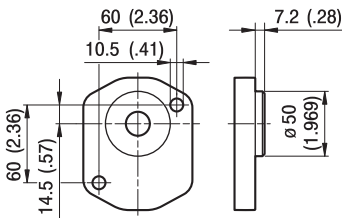
T1

Coppia Max
Max Torque 130 Nm

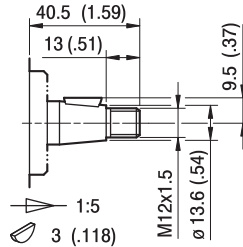


S3

DIN 5482
B17x14
Coppia Max
Max Torque 130 Nm

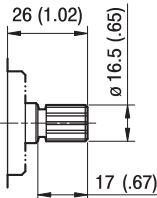


BK2



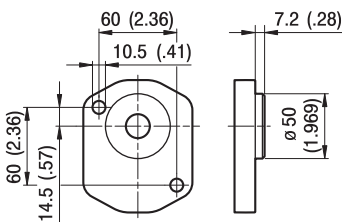
T2

Coppia Max
Max Torque 130 Nm

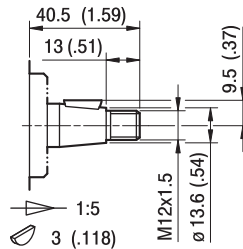


S4

DIN 5482
B17x14
Coppia Max
Max Torque 130 Nm

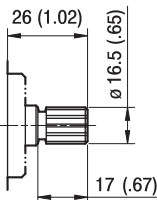


BK4



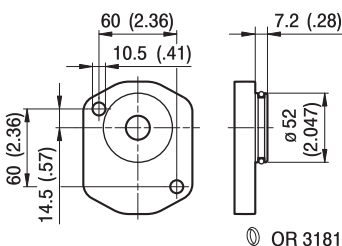
T2

Coppia Max
Max Torque 130 Nm



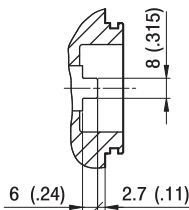
S4

DIN 5482
B17x14
Coppia Max
Max Torque 130 Nm



BK7

OR 3181

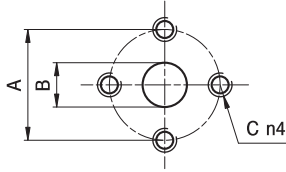


G0

Coppia Max
Max Torque 105 Nm

ALM2

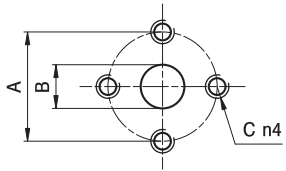
PORTE / PORTS



E

TIPO TYPE	MOTORE BIDIREZIONALE BI-DIRECTIONAL MOTOR			MOTORE MONODIREZIONALE MONO-DIRECTIONAL MOTOR		
	USCITA - ENTRATA OUTPUT - INPUT			ENTRATA INPUT		
	A	B	C	A	B	C
ALM2...6 ÷ ALM2...9	30	13	M6	30	13	M6
ALM2...10 ÷ ALM2...13	40	13	M8	40	13	M8
ALM2...16 ÷ ALM2...25	40	19	M8	40	13	M8
ALM2...30 ÷ ALM2...40	40	19	M8	40	19	M8

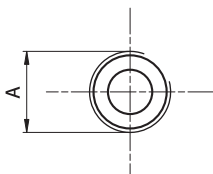
I valori delle coppie di serraggio delle viti presenti nel kit raccordo sono indicate a pag 46 (capitolo accessori).
Tightening torques of the fittings screws are specified on page 46 (accessories section).



EP

TIPO TYPE	MOTORE BIDIREZIONALE BI-DIRECTIONAL MOTOR			MOTORE MONODIREZIONALE MONO-DIRECTIONAL MOTOR		
	USCITA - ENTRATA OUTPUT - INPUT			ENTRATA INPUT		
	A	B	C	A	B	C
ALM2...6	40	13	M8	30	13	M6
ALM2...10 ÷ ALM2...13	30	13	M6	30	13	M6
ALM2...16 ÷ ALM2...40	40	19	M8	30	13	M6

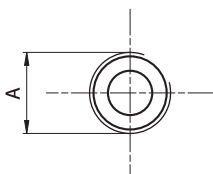
I valori delle coppie di serraggio delle viti presenti nel kit raccordo sono indicate a pag 46 (capitolo accessori).
Tightening torques of the fittings screws are specified on page 46 (accessories section).



FG

TIPO TYPE	MOTORE BIDIREZIONALE BI-DIRECTIONAL MOTOR			MOTORE MONODIREZIONALE MONO-DIRECTIONAL MOTOR		
	USCITA - ENTRATA OUTPUT - INPUT			ENTRATA INPUT		
	A			A		
ALM2...6 ÷ ALM2...16	G1/2			G1/2		
ALM2...20 ÷ ALM2...40	G3/4			G1/2		

Raccordo G1/2 coppia di serraggio massima 50 Nm. Raccordo G3/4 coppia di serraggio massima 60 Nm.
Consigliamo di richiedere conferma al fornitore del raccordo.
Tightening torques for G1/2 fitting: 50 Nm. Tightening torques for G3/4 fitting: 60 Nm. Please check with the fittings suppliers.



FC

TIPO TYPE	MOTORE BIDIREZIONALE BI-DIRECTIONAL MOTOR			MOTORE MONODIREZIONALE MONO-DIRECTIONAL MOTOR		
	USCITA - ENTRATA OUTPUT - INPUT			ENTRATA INPUT		
	A			A		
ALM2...6 ÷ ALM2...16	Rc1/2			Rc1/2		
ALM2...20 ÷ ALM2...40	Rc3/4			Rc1/2		

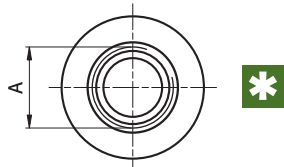
Raccordo Rc1/2 coppia di serraggio massima 50 Nm. Raccordo Rc3/4 coppia di serraggio massima 60 Nm.
Consigliamo di richiedere conferma al fornitore del raccordo.
Tightening torques for Rc1/2 fitting: 50 Nm. Tightening torques for Rc3/4 fitting: 60 Nm. Please check with the fittings suppliers.



Nel caso di funzionamento a pressioni elevate e intermittenti è possibile una riduzione della resistenza a fatica del corpo.
A reduction of body's fatigue strength may occur if the pump is working at elevated and intermittent pressures.

ALM2

PORTE / PORTS

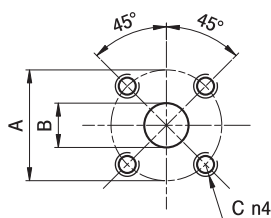


STANDARD SAE J1926/1

FA

TIPO TYPE	MOTORE BIDIREZIONALE BI-DIRECTIONAL MOTOR	MOTORE MONODIREZIONALE MONO-DIRECTIONAL MOTOR
	USCITA - ENTRATA OUTPUT - INPUT	ENTRATA INPUT
	A	A
ALM2...6 ÷ ALM2...40	1 1/16-12 UNF	7/8-14 UNF

Raccordo 7/8-14 UNF coppia di serraggio massima 70 Nm. Raccordo 1 1/16-12 UNF coppia di serraggio massima 70 Nm.
 Consigliamo di richiedere conferma al fornitore del raccordo.
 Tightening torques for 7/8-14 UNF fitting: 70 Nm. Tightening torques for 1 1/16-12 UNF fitting: 70 Nm.
 Please check with the fittings suppliers.



D

TIPO TYPE	MOTORE BIDIREZIONALE BI-DIRECTIONAL MOTOR			MOTORE MONODIREZIONALE MONO-DIRECTIONAL MOTOR		
	USCITA - ENTRATA OUTPUT - INPUT			ENTRATA INPUT		
	A	B	C	A	B	C
ALM2...6 ÷ ALM2...12	40	15	M6	35	15	M6
ALM2...13 ÷ ALM2...40	40	20	M6	35	15	M6

I valori delle coppie di serraggio delle viti presenti nel kit raccordo sono indicate a pag 46 (capitolo accessori).
 Tightening torques of the fittings screws are specified on page 46 (accessories section).