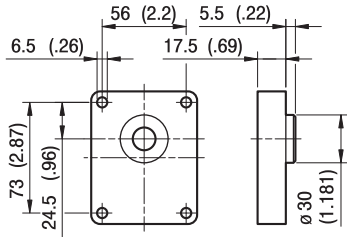


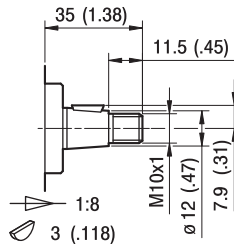
# ALP1

## FLANGE / FLANGES



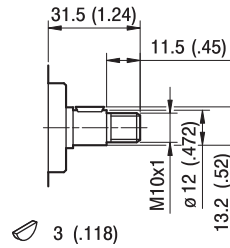
**A**

## ALBERI / SHAFTS



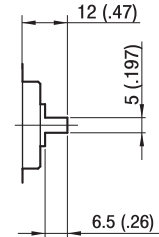
**TO**

Coppia Max  
Max Torque 90 Nm



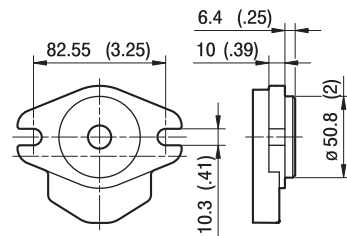
**CO**

Coppia Max  
Max Torque 25 Nm

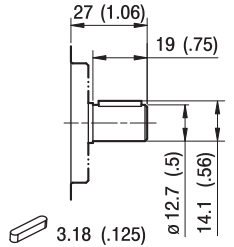


**GO**

Coppia Max  
Max Torque 35 Nm

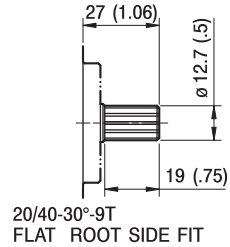


**A**



**C1**

Coppia Max  
Max Torque 55 Nm

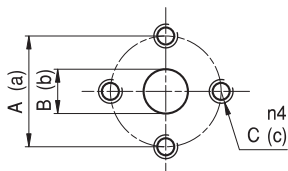


**S1**

Coppia Max  
Max Torque 55 Nm

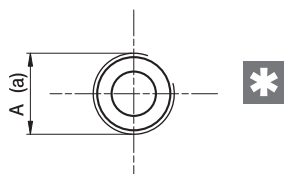
# ALP1

## PORTE / PORTS


**E**

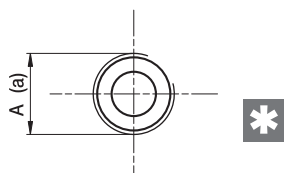
TIPO TYPE	ASPIRAZIONE INLET			MANDATA OUTLET		
	A	B	C	a	b	c
ALP1...2 ÷ ALP1...20	30	13	M6	30	13	M6

I valori delle coppie di serraggio delle viti presenti nel kit raccordo sono indicate a pag 57 (capitolo accessori).  
 Tightening torques of the fittings screws are specified on page 57 (accessories section).


**FG**

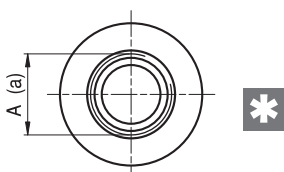
TIPO TYPE	ASPIRAZIONE INLET	MANDATA OUTLET
	A	a
ALP1...2 ÷ ALP1...5	G1/2	G3/8
ALP1...6 ÷ ALP1...20	G1/2	G1/2

Raccordo G1/2 coppia di serraggio massima 50 Nm. Raccordo G3/8 coppia di serraggio massima 35 Nm.  
 Consigliamo di richiedere conferma al fornitore del raccordo.  
 Tightening torques for G1/2 fitting: 50 Nm. Tightening torques for G3/8 fitting: 35 Nm. Please check with the fittings suppliers.


**FC**

TIPO TYPE	ASPIRAZIONE INLET	MANDATA OUTLET
	A	a
ALP1...2 ÷ ALP1...20	Rc1/2	Rc1/2

Raccordo Rc1/2 coppia di serraggio massima 50 Nm.  
 Consigliamo di richiedere conferma al fornitore del raccordo.  
 Tightening torques for Rc1/2 fitting: 50 Nm. Please check with the fittings suppliers.



STANDARD SAE J1926/1

**FA**

TIPO TYPE	ASPIRAZIONE INLET	MANDATA OUTLET
	A	a
ALP1...2 ÷ ALP1...9	3/4-16 UNF	9/16-18 UNF
ALP1...11 ÷ ALP1...20	7/8-14 UNF	3/4-16 UNF

Raccordo 9/16-18 UNF coppia di serraggio massima 30 Nm. Raccordo 3/4-16 UNF coppia di serraggio massima 60 Nm.  
 Raccordo 7/8-14 UNF coppia di serraggio massima 70 Nm. Consigliamo di richiedere conferma al fornitore del raccordo.  
 Tightening torques for 9/16-18 UNF fitting: 30 Nm. Tightening torques for 3/4-16 UNF fitting: 60 Nm.  
 Tightening torques for 7/8-14 UNF fitting: 70 Nm. Please check with the fittings suppliers.