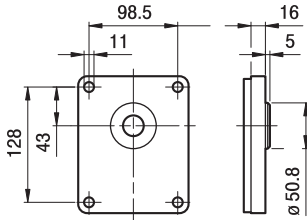


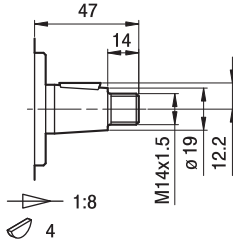
GHM3

FLANGE / FLANGES

ALBERI / SHAFTS

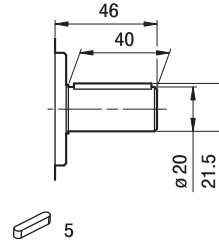


TO



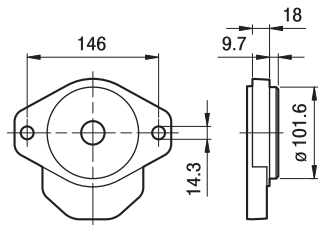
TO

Coppia Max
Max Torque 280 Nm

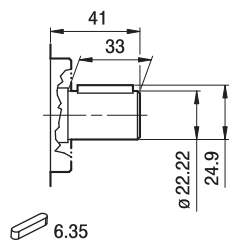


CO

Coppia Max
Max Torque 265 Nm

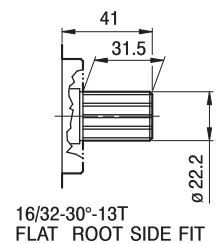


A



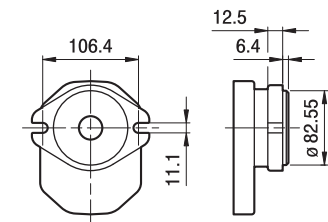
C1

Coppia Max
Max Torque 295 Nm

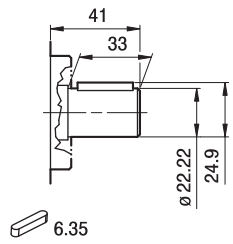


S1

16/32-30°-13T
FLAT ROOT SIDE FIT
Coppia Max
Max Torque 405 Nm

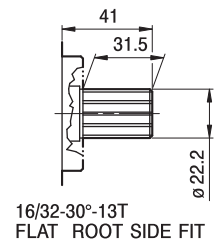


A2



C1

Coppia Max
Max Torque 295 Nm



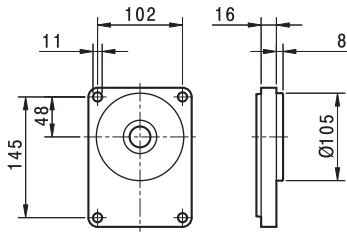
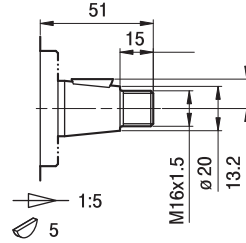
S1

16/32-30°-13T
FLAT ROOT SIDE FIT
Coppia Max
Max Torque 405 Nm

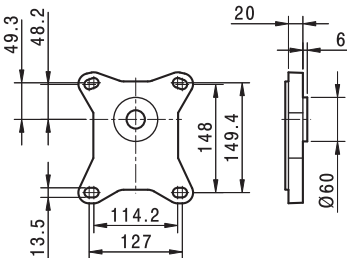
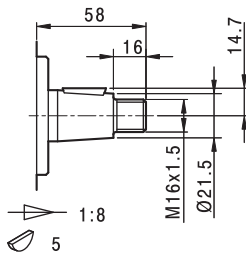
GHM3

FLANGE / FLANGES

ALBERI / SHAFTS


BK1

T1

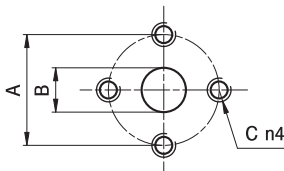
Coppia Max
 Max Torque 285 Nm


5

T2

Coppia Max
 Max Torque 325 Nm

GHM3

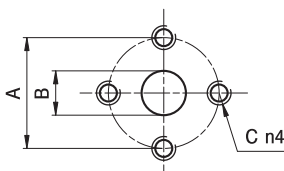
PORTE / PORTS



E

TIPO TYPE	MOTORE BIDIREZIONALE BI-DIRECTIONAL MOTOR			MOTORE MONODIREZIONALE MONO-DIRECTIONAL MOTOR		
	USCITA - ENTRATA OUTPUT - INPUT			ENTRATA INPUT		
	A	B	C	A	B	C
GHM3...33 ÷ GHM3...60	56	27	M10	56	19	M10
GHM3...66	51	27	M10	51	27	M10
GHM3...80	56	27	M10	56	27	M10
GHM3...94 ÷ GHM3...135	62	33	M10	51	27	M10

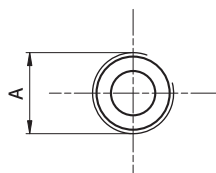
I valori delle coppie di serraggio delle viti presenti nel kit raccordo sono indicate a pag 52 (capitolo accessori).
Tightening torques of the fittings screws are specified on page 52 (accessories section).



EP

TIPO TYPE	MOTORE BIDIREZIONALE BI-DIRECTIONAL MOTOR			MOTORE MONODIREZIONALE MONO-DIRECTIONAL MOTOR		
	USCITA - ENTRATA OUTPUT - INPUT			ENTRATA INPUT		
	A	B	C	A	B	C
GHM3...33	40	19	M8	40	19	M8
GHM3...40 ÷ GHM3...80	51	27	M10	40	19	M8

I valori delle coppie di serraggio delle viti presenti nel kit raccordo sono indicate a pag 52 (capitolo accessori).
Tightening torques of the fittings screws are specified on page 52 (accessories section).

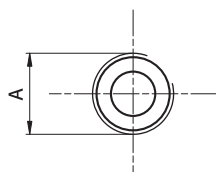


FG

TIPO TYPE	MOTORE BIDIREZIONALE BI-DIRECTIONAL MOTOR			MOTORE MONODIREZIONALE MONO-DIRECTIONAL MOTOR		
	USCITA - ENTRATA OUTPUT - INPUT			ENTRATA INPUT		
	A			A		
GHM3...33	G3/4			G3/4		
GHM3...40 ÷ GHM3...60	G1			G3/4		
GHM3...66 ÷ GHM3...94	G1 1/4			G1		
GHM3...110 ÷ GHM3...135	G1 1/2			G1 1/4		

Raccordo G3/4 coppia di serraggio massima 60 Nm. Raccordo G1 coppia di serraggio massima 70 Nm. Raccordo G1 1/4 coppia di serraggio massima 80 Nm. Raccordo G1 1/2 coppia di serraggio massima 90 Nm. Consigliamo di richiedere conferma al fornitore del raccordo.

Tightening torques for G3/4 fitting: 60 Nm. Tightening torques for G1 fitting: 70 Nm. Tightening torques for G1 1/4 fitting: 80 Nm. Tightening torques for G1 1/2 fitting: 90 Nm. Please check with the fittings suppliers.



FC

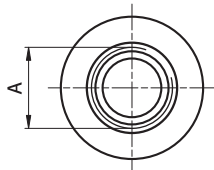
TIPO TYPE	MOTORE BIDIREZIONALE BI-DIRECTIONAL MOTOR			MOTORE MONODIREZIONALE MONO-DIRECTIONAL MOTOR		
	USCITA - ENTRATA OUTPUT - INPUT			ENTRATA INPUT		
	A			A		
GHM3...33	Rc3/4			Rc3/4		
GHM3...40 ÷ GHM3...60	Rc1			Rc3/4		
GHM3...66 ÷ GHM3...94	Rc1 1/4			Rc1		
GHM3...110 ÷ GHM3...135	Rc1 1/2			Rc1 1/4		

Raccordo Rc3/4 coppia di serraggio massima 60 Nm. Raccordo Rc1 coppia di serraggio massima 70 Nm. Raccordo Rc1 1/4 coppia di serraggio massima 80 Nm. Raccordo Rc1 1/2 coppia di serraggio massima 90 Nm. Consigliamo di richiedere conferma al fornitore del raccordo.

Tightening torques for Rc3/4 fitting: 60 Nm. Tightening torques for Rc1 fitting: 70 Nm. Tightening torques for Rc1 1/4 fitting: 80 Nm. Tightening torques for Rc1 1/2 fitting: 90 Nm. Please check with the fittings suppliers.

GHM3

PORTE / PORTS



STANDARD SAE J1926/1

FA

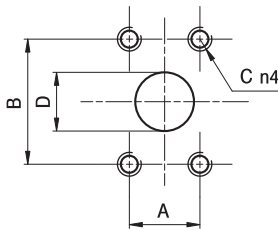
TIPO TYPE	MOTORE BIDIREZIONALE BI-DIRECTIONAL MOTOR	MOTORE MONODIREZIONALE MONO-DIRECTIONAL MOTOR
	USCITA - ENTRATA OUTPUT - INPUT	ENTRATA INPUT
	A	A
GHM3...33 ÷ GHM3...50	1 5/16-12 UNF	1 1/16-12 UNF
GHM3...60 ÷ GHM3...80	1 5/8-12 UNF	1 1/16-12 UNF
GHM3...94 ÷ GHM3...135	1 7/8-12 UNF	1 5/16-12 UNF

Raccordo 1 1/16-12 UNF coppia di serraggio massima 70 Nm. Raccordo 1 5/16-12 UNF coppia di serraggio massima 80 Nm.

Raccordo 1 5/8-12 UNF coppia di serraggio massima 80 Nm. Raccordo 1 7/8-12 UNF coppia di serraggio massima 80 Nm.

Consigliamo di richiedere conferma al fornitore del raccordo.

Tightening torques for 1 1/16-12 UNF fitting: 70 Nm. Tightening torques for 1 5/16-12 UNF fitting: 80 Nm. Tightening torques for 1 5/8-12 UNF fitting: 80 Nm. Tightening torques for 1 7/8-12 UNF fitting: 80 Nm. Please check with the fittings suppliers.

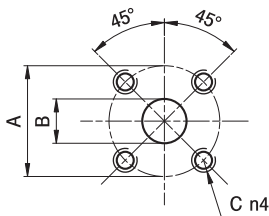


A

TIPO TYPE	MOTORE BIDIREZIONALE BI-DIRECTIONAL MOTOR				MOTORE MONODIREZIONALE MONO-DIRECTIONAL MOTOR			
	USCITA - ENTRATA OUTPUT - INPUT				ENTRATA INPUT			
	A	B	C	D	A	B	C	D
GHM3...33 ÷ GHM3...80	26,19	52,37	3/8-16 UNC	27	22,23	47,63	3/8-16 UNC	19
GHM3...94 ÷ GHM3...135	30,2	58,7	7/16-14 UNC	33	26,19	52,37	3/8-16 UNC	27

I valori delle coppie di serraggio delle viti presenti nel kit raccordo sono indicate a pag 52 (capitolo accessori).

Tightening torques of the fittings screws are specified on page 52 (accessories section).



D

TIPO TYPE	MOTORE BIDIREZIONALE BI-DIRECTIONAL MOTOR			MOTORE MONODIREZIONALE MONO-DIRECTIONAL MOTOR		
	USCITA - ENTRATA OUTPUT - INPUT			ENTRATA INPUT		
	A	B	C	A	B	C
GHM3...33 ÷ GHM3...80	55	27	M8	55	19	M8

I valori delle coppie di serraggio delle viti presenti nel kit raccordo sono indicate a pag 52 (capitolo accessori).

Tightening torques of the fittings screws are specified on page 52 (accessories section).

