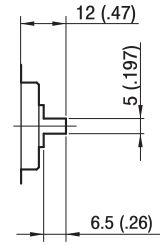
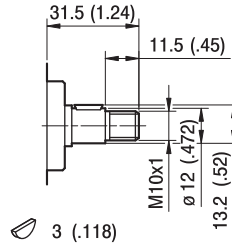
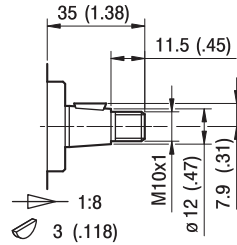
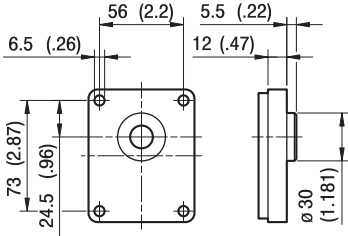


# GHP1

## FLANGE / FLANGES

## ALBERI / SHAFTS



**TO**

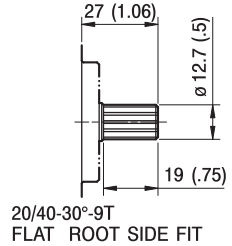
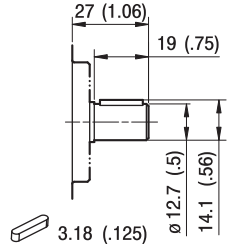
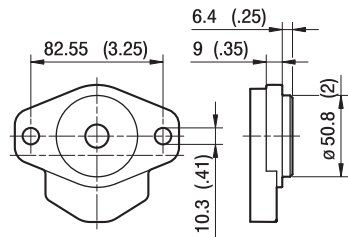
Coppia Max  
Max Torque 90 Nm

**CO**

Coppia Max  
Max Torque 25 Nm

**GO**

Coppia Max  
Max Torque 35 Nm



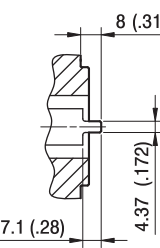
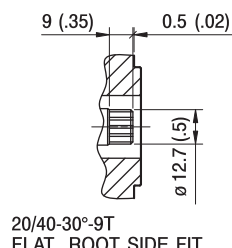
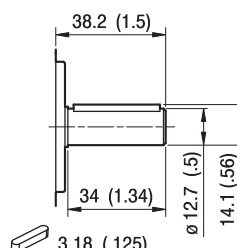
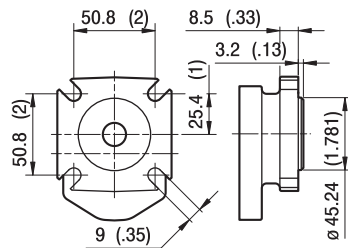
**A**

Coppia Max  
Max Torque 55 Nm

**C1**

Coppia Max  
Max Torque 55 Nm

**S1**



**AQ**

Coppia Max  
Max Torque 95 Nm

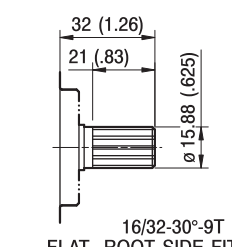
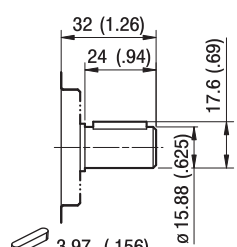
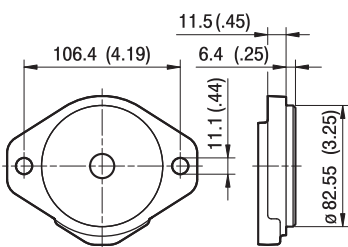
**C2**

Coppia Max  
Max Torque 55 Nm

**S2**

Coppia Max  
Max Torque 25 Nm

**G1**



**A2**

Coppia Max  
Max Torque 105 Nm

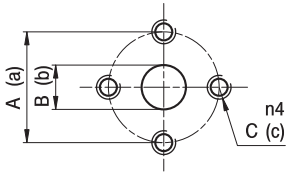
**C3**

Coppia Max  
Max Torque 110 Nm

**S3**

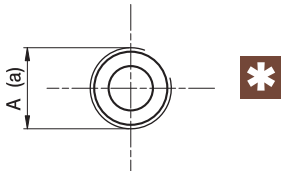
# GHP1

## PORTE / PORTS


**E**

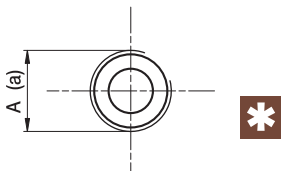
TIPO TYPE	ASPIRAZIONE INLET			MANDATA OUTLET		
	A	B	C	a	b	c
GHP1...2÷GHP1...20	30	13	M6	30	13	M6

I valori delle coppie di serraggio delle viti presenti nel kit raccordo sono indicate a pag 55 (capitolo accessori).  
 Tightening torques of the fittings screws are specified on page 55 (accessories section).


**FG**

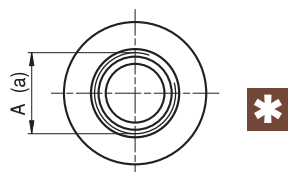
TIPO TYPE	ASPIRAZIONE INLET	MANDATA OUTLET
	A	a
GHP1...2 ÷ GHP1...5	G1/2	G3/8
GHP1...6÷GHP1...20	G1/2	G1/2

Raccordo G1/2 coppia di serraggio massima 50 Nm. Raccordo G3/8 coppia di serraggio massima 35 Nm.  
 Consigliamo di richiedere conferma al fornitore del raccordo.  
 Tightening torques for G1/2 fitting: 50 Nm. Tightening torques for G3/8 fitting: 35 Nm. Please check with the fittings suppliers.


**FC**

TIPO TYPE	ASPIRAZIONE INLET	MANDATA OUTLET
	A	a
GHP1...2÷GHP1...20	Rc1/2	Rc1/2

Raccordo Rc1/2 coppia di serraggio massima 50 Nm.  
 Consigliamo di richiedere conferma al fornitore del raccordo.  
 Tightening torques for Rc1/2 fitting: 50 Nm. Please check with the fittings suppliers.



STANDARD SAE J1926/1

**FA**

TIPO TYPE	ASPIRAZIONE INLET	MANDATA OUTLET
	A	a
GHP1...2 ÷ GHP1...9	3/4-16 UNF	9/16-18 UNF
GHP1...11÷GHP1...20	7/8-14 UNF	3/4-16 UNF

Raccordo 9/16-18 UNF coppia di serraggio massima 30 Nm. Raccordo 3/4-16 UNF coppia di serraggio massima 60 Nm.  
 Raccordo 7/8-14 UNF coppia di serraggio massima 70 Nm. Consigliamo di richiedere conferma al fornitore del raccordo.  
 Tightening torques for 9/16-18 UNF fitting: 30 Nm. Tightening torques for 3/4-16 UNF fitting: 60 Nm.  
 Tightening torques for 7/8-14 UNF fitting: 70 Nm. Please check with the fittings suppliers.