

GHM2A3

Parti accessorie a corredo del motore standard: linguetta (codice 522068).
 Monta flangia 101-2 (B) secondo norma SAE J744c.

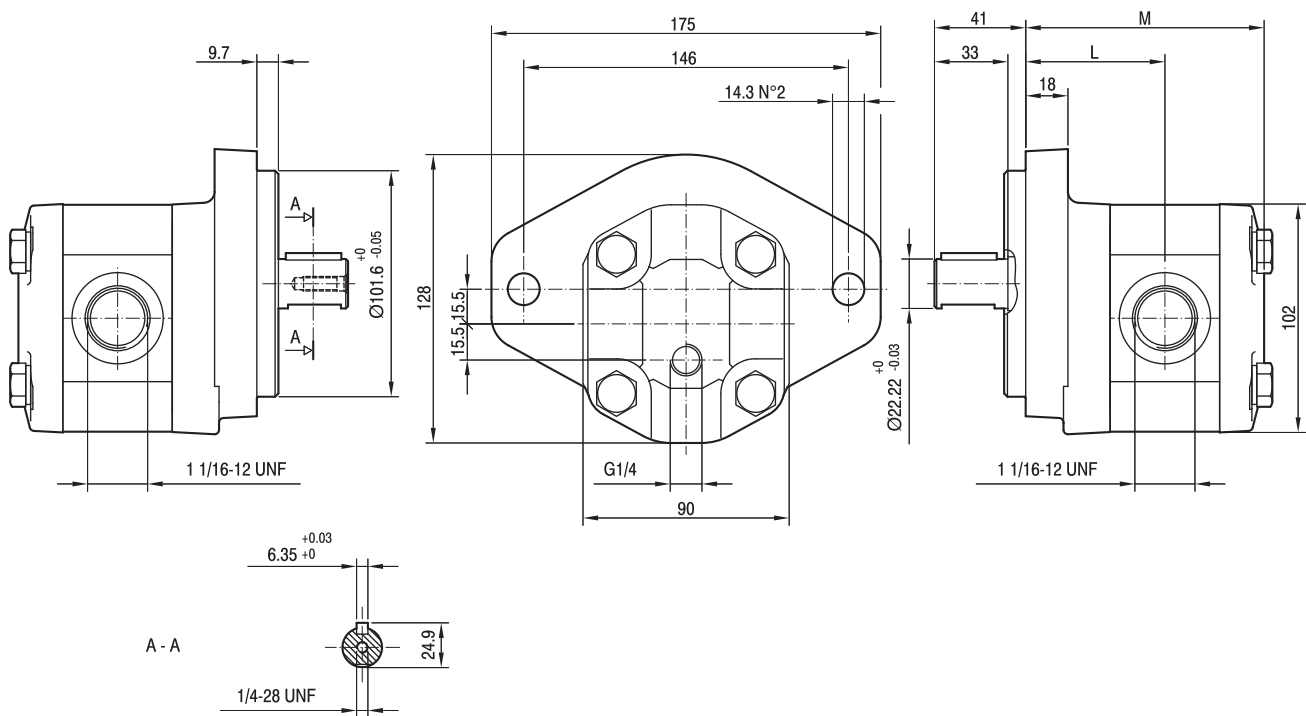
Le porte standard sono lavorate secondo la specifica SAE J1926/1 (ISO 11926-1) relativa a porte filettate con tenuta O-ring.
 Filetto 1/4-28 UNF profondità utile 16 mm.
 Drenaggio G1/4 profondità utile 12 mm.

Accessories supplied with the standard motor: key (code 522068).

Mounting flange 101-2 (B) in compliance with SAE J744c.

Standard ports are machined in compliance with threaded port with O-ring seal in truncated housing SAE J1926/1 (ISO 11926-1).

1/4-28 UNF thread depth 16 mm.
 G1/4 drain port thread depth 12 mm.



TIPO TYPE	CILINDRATA DISPLACEMENT	PORTATA a 1500 giri/min FLOW at 1500 rev/min	PRESSIONI MASSIME MAX PRESSURE			VELOCITÀ MASSIMA MAX SPEED	DIMENSIONI DIMENSIONS	
			P _I	P _C	P _P		L	M
	cm ³ /giro (cm ³ /rev)	litri/min (litres/min)	bar	bar	bar	giri/min (rpm)	mm	mm
GHM2A3-R-6-E1	4,5	6,4	280	270	295	4000	64,5	111
GHM2A3-R-9-E1	6,4	9,1	280	270	295	4000	66	114
GHM2A3-R-10-E1	7	10	280	270	295	4000	66,5	115
GHM2A3-R-12-E1	8,3	11,8	280	270	295	4000	67,5	117
GHM2A3-R-13-E1	9,6	13,7	280	270	295	4000	68,5	119
GHM2A3-R-16-E1	11,5	16,4	280	270	295	4000	70	122
GHM2A3-R-20-E1	14,1	20,1	260	250	275	3200	72	126
GHM2A3-R-22-E1	16,0	22,8	260	250	275	2800	73,5	129
GHM2A3-R-25-E1	17,9	25,5	260	250	275	2500	75	132
GHM2A3-R-30-E1	21,1	30,1	230	220	245	2200	77,5	137
GHM2A3-R-34-E1	23,7	33,7	230	220	245	2000	79,5	141
GHM2A3-R-37-E1	25,5	36,4	210	200	225	1800	81	144
GHM2A3-R-40-E1	28,2	40,1	200	190	215	1800	83	148