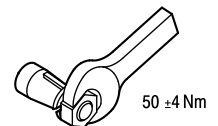
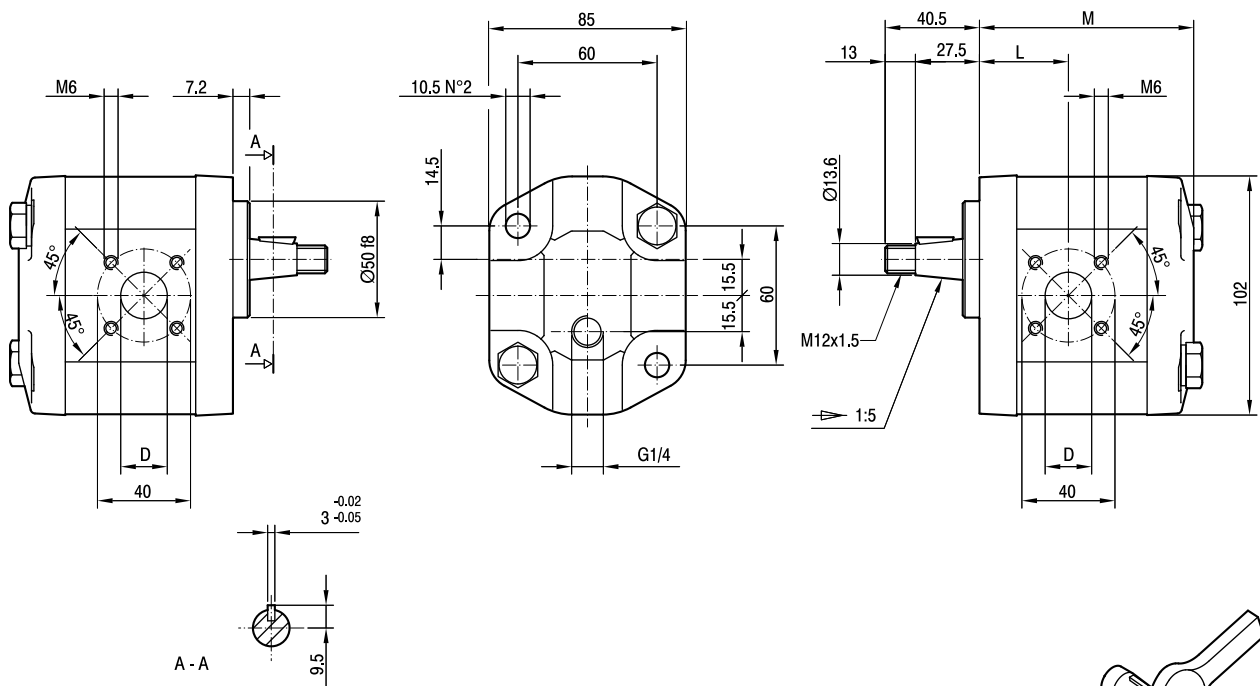


GHM2BK2

Parti accessorie a corredo del motore standard:
 linguetta a disco (codice 522055), dado
 M12x1.5 (codice 523016),
 rosetta elastica spaccata (codice 523005).
 Porte standard: filetti M6 profondità utile 13 mm.
 Fissaggio motore: n.2 viti M10,
 coppia di serraggio 46 ± 4 Nm.
 Drenaggio G1/4 profondità utile 12 mm.

Accessories supplied with the standard motor:
 woodruff key (code 522055),
 M12x1.5 exagonal nut (code 523016),
 washer (code 523005).
 Standard ports: M6 threads depth 13 mm.
 To mount the motor: n.2 M10 screws with a
 torque wrench setting fixed at 46 ± 4 Nm.
 G1/4 drain port thread depth 12 mm.



TIPO TYPE	CILINDRATA DISPLACEMENT		PORTATA a 1500 giri/min FLOW at 1500 rev/min	PRESSIONI MASSIME MAX PRESSURE			VELOCITÀ MASSIMA MAX SPEED	DIMENSIONI DIMENSIONS		
	cm ³ /giro [cm ³ /rev]	litri/min [litres/min]		P _I bar	P _C bar	P _P bar		L mm	M mm	D mm
GHM2BK2-R6-E1	4,5	6,4	280	270	295	4000	37	89	15	
GHM2BK2-R9-E1	6,4	9,1	280	270	295	4000	38,2	92	15	
GHM2BK2-R10-E1	7	10	280	270	295	4000	44,5	93	15	
GHM2BK2-R12-E1	8,3	11,8	280	270	295	4000	45,5	95	15	
GHM2BK2-R13-E1	9,6	13,7	280	270	295	4000	40,3	97	20	
GHM2BK2-R16-E1	11,5	16,4	280	270	295	4000	44,7	100	20	
GHM2BK2-R20-E1	14,1	20,1	260	250	275	4000	44,7	104	20	
GHM2BK2-R22-E1	16,0	22,8	260	250	275	4000	44,7	107	20	
GHM2BK2-R25-E1	17,9	25,5	260	250	275	4000	53	110	20	
GHM2BK2-R30-E1	21,1	30,1	230	220	245	3400	44,7	115	20	
GHM2BK2-R34-E1	23,7	33,7	230	220	245	3000	52,2	119	20	
GHM2BK2-R37-E1	25,5	36,4	210	200	225	2600	59	122	20	
GHM2BK2-R40-E1	28,2	40,1	200	190	215	2600	61	126	20	