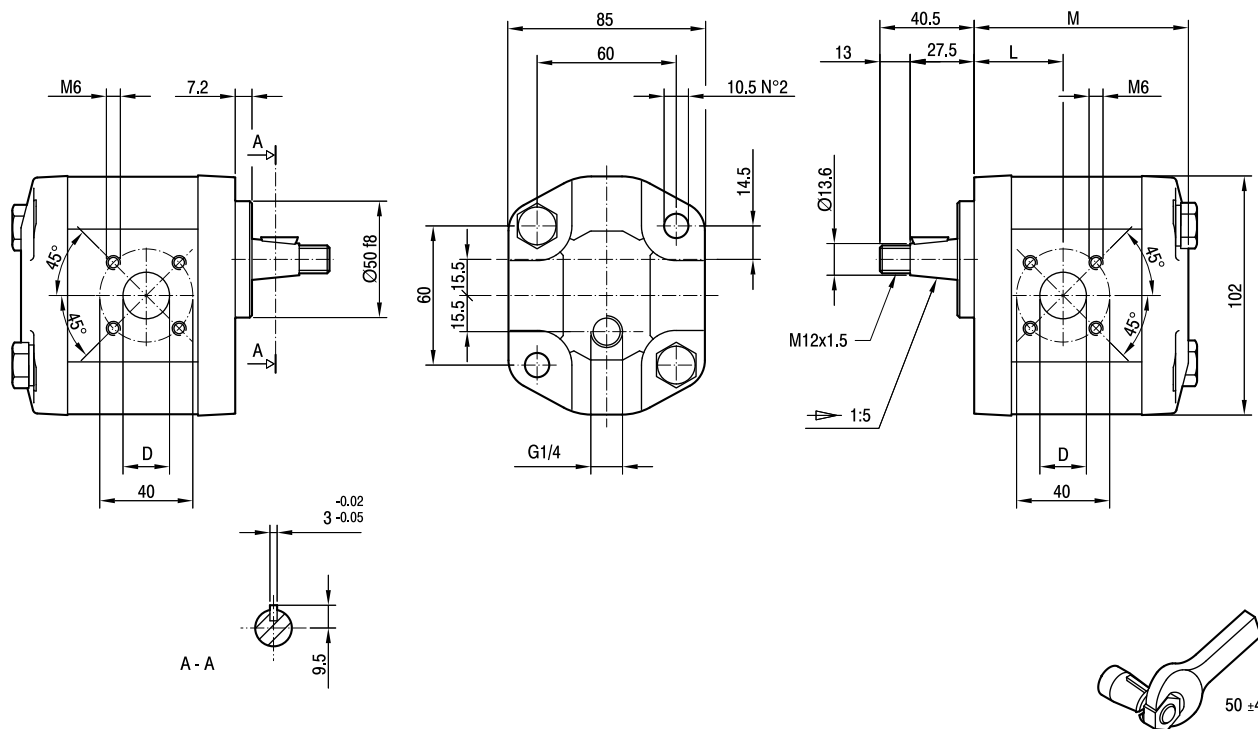


# GHM2BK4

Parti accessorie a corredo del motore standard: linguetta a disco (codice 522055), dado M12x1.5 (codice 523016), rosetta elastica spaccata (codice 523005).  
 Porte standard: filetti M6 profondità utile 13 mm.  
 Fissaggio motore: n.2 viti M10, coppia di serraggio  $46 \pm 4$  Nm.  
 Drenaggio G1/4 profondità utile 12 mm.

Accessories supplied with the standard motor: woodruff key (code 522055), M12x1.5 exagonal nut (code 523016), washer (code 523005).  
 Standard ports: M6 threads depth 13 mm.  
 To mount the motor: n.2 M10 screws with a torque wrench setting fixed at  $46 \pm 4$  Nm.  
 G1/4 drain port thread depth 12 mm.



| TIPO<br>TYPE   | CILINDRATA<br>DISPLACEMENT                   |                                                 | PRESSIONI MASSIME<br>MAX PRESSURE |                |                | VELOCITÀ MASSIMA<br>MAX SPEED | DIMENSIONI<br>DIMENSIONS |     |    |
|----------------|----------------------------------------------|-------------------------------------------------|-----------------------------------|----------------|----------------|-------------------------------|--------------------------|-----|----|
|                | cm <sup>3</sup> /giro [cm <sup>3</sup> /rev] | PORTATA a 1500 giri/min<br>FLOW at 1500 rev/min | P <sub>I</sub>                    | P <sub>C</sub> | P <sub>P</sub> |                               | L                        | M   | D  |
|                | litri/min [litres/min]                       | bar                                             | bar                               | bar            | giri/min [rpm] | mm                            | mm                       | mm  |    |
| GHM2BK4-R6-E1  | 4,5                                          | 6,4                                             | 280                               | 270            | 295            | 4000                          | 37                       | 89  | 15 |
| GHM2BK4-R9-E1  | 6,4                                          | 9,1                                             | 280                               | 270            | 295            | 4000                          | 38,2                     | 92  | 15 |
| GHM2BK4-R10-E1 | 7                                            | 10                                              | 280                               | 270            | 295            | 4000                          | 44,5                     | 93  | 15 |
| GHM2BK4-R12-E1 | 8,3                                          | 11,8                                            | 280                               | 270            | 295            | 4000                          | 45,5                     | 95  | 15 |
| GHM2BK4-R13-E1 | 9,6                                          | 13,7                                            | 280                               | 270            | 295            | 4000                          | 40,3                     | 97  | 20 |
| GHM2BK4-R16-E1 | 11,5                                         | 16,4                                            | 280                               | 270            | 295            | 4000                          | 44,7                     | 100 | 20 |
| GHM2BK4-R20-E1 | 14,1                                         | 20,1                                            | 260                               | 250            | 275            | 4000                          | 44,7                     | 104 | 20 |
| GHM2BK4-R22-E1 | 16,0                                         | 22,8                                            | 260                               | 250            | 275            | 4000                          | 44,7                     | 107 | 20 |
| GHM2BK4-R25-E1 | 17,9                                         | 25,5                                            | 260                               | 250            | 275            | 4000                          | 53                       | 110 | 20 |
| GHM2BK4-R30-E1 | 21,1                                         | 30,1                                            | 230                               | 220            | 245            | 3400                          | 44,7                     | 115 | 20 |
| GHM2BK4-R34-E1 | 23,7                                         | 33,7                                            | 230                               | 220            | 245            | 3000                          | 52,2                     | 119 | 20 |
| GHM2BK4-R37-E1 | 25,5                                         | 36,4                                            | 210                               | 200            | 225            | 2600                          | 59                       | 122 | 20 |
| GHM2BK4-R40-E1 | 28,2                                         | 40,1                                            | 200                               | 190            | 215            | 2600                          | 61                       | 126 | 20 |