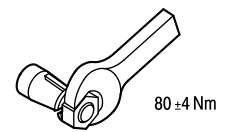
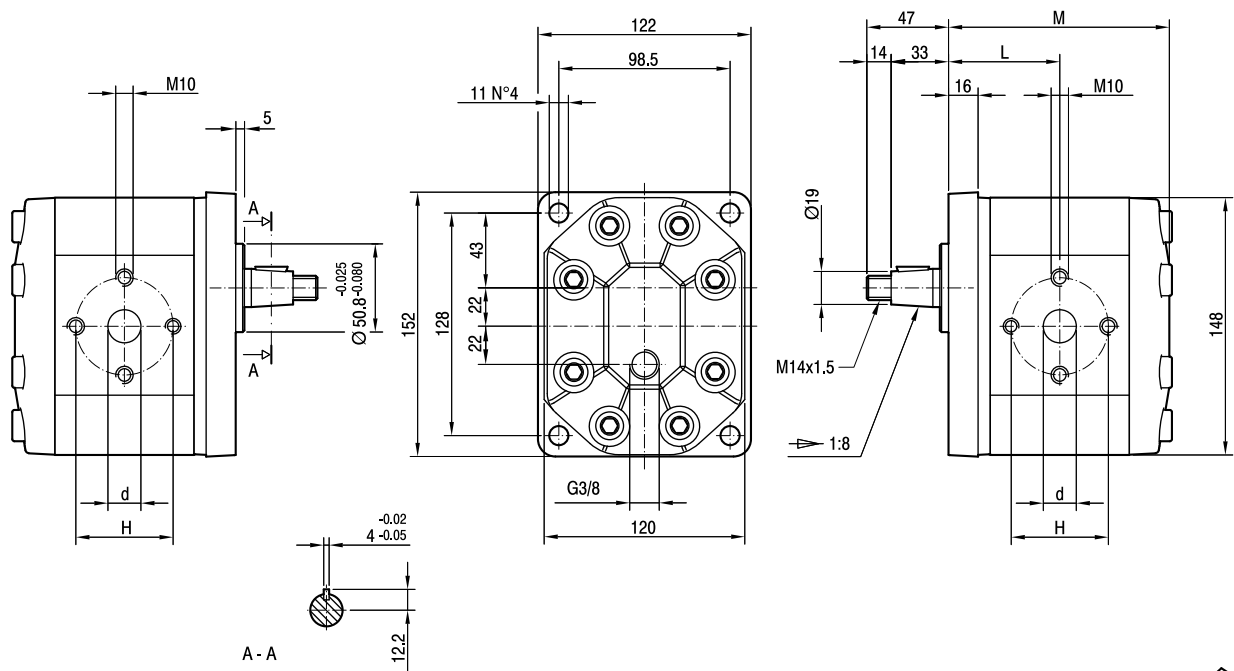


GHM3

Parti accessorie a corredo del motore standard: linguetta a disco (codice 522058), dado M14x1.5 (codice 523017), rosetta elastica spaccata (codice 523006).
 Porte standard: filetti M10 profondità utile 19 mm.
 Drenaggio G3/8 profondità utile 15 mm.

Accessories supplied with the standard motor: woodruff key (code 522058), M14x1.5 hexagonal nut (code 523017), washer (code 523006).
 Standard ports: M10 threads depth 19 mm.
 G3/8 drain port thread depth 15 mm.



| TIPO TYPE | CILINDRATA DISPLACEMENT | PORTATA a 1500 giri/min FLOW at 1500 rev/min | PRESSIONI MASSIME MAX PRESSURE | | | VELOCITÀ MASSIMA MAX SPEED | DIMENSIONI DIMENSIONS | | | |
|---------------|--|---|-----------------------------------|----------------|----------------|-------------------------------|--------------------------|-----|----|----|
| | | | P _l | P _C | P _p | | L | M | d | H |
| | cm ³ /giro [cm ³ /rev] | litri/min [litres/min] | bar | bar | bar | giri/min [rpm] | mm | mm | mm | mm |
| GHM3-R-33-E1 | 22 | 31 | 280 | 270 | 295 | 3500 | 64.5 | 128 | 27 | 56 |
| GHM3-R-40-E1 | 26 | 37 | 280 | 270 | 295 | 3000 | 66 | 131 | 27 | 56 |
| GHM3-R-50-E1 | 33 | 48 | 270 | 260 | 285 | 3000 | 68,5 | 136 | 27 | 56 |
| GHM3-R-60-E1 | 39 | 56 | 260 | 250 | 275 | 3000 | 70,5 | 140 | 27 | 56 |
| GHM3-R-66-E1 | 44 | 62 | 250 | 240 | 265 | 2800 | 72 | 143 | 27 | 51 |
| GHM3-R-80-E1 | 52 | 74 | 230 | 220 | 245 | 2400 | 75 | 149 | 27 | 56 |
| GHM3-R-94-E1 | 61 | 87 | 210 | 200 | 225 | 2800 | 78 | 155 | 33 | 62 |
| GHM3-R-110-E1 | 71 | 101 | 200 | 190 | 215 | 2500 | 81,5 | 162 | 33 | 62 |
| GHM3-R-120-E1 | 78 | 112 | 180 | 170 | 195 | 2300 | 84 | 167 | 33 | 62 |
| GHM3-R-135-E1 | 87 | 124 | 160 | 150 | 175 | 2000 | 87 | 173 | 33 | 62 |