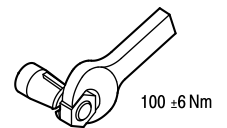
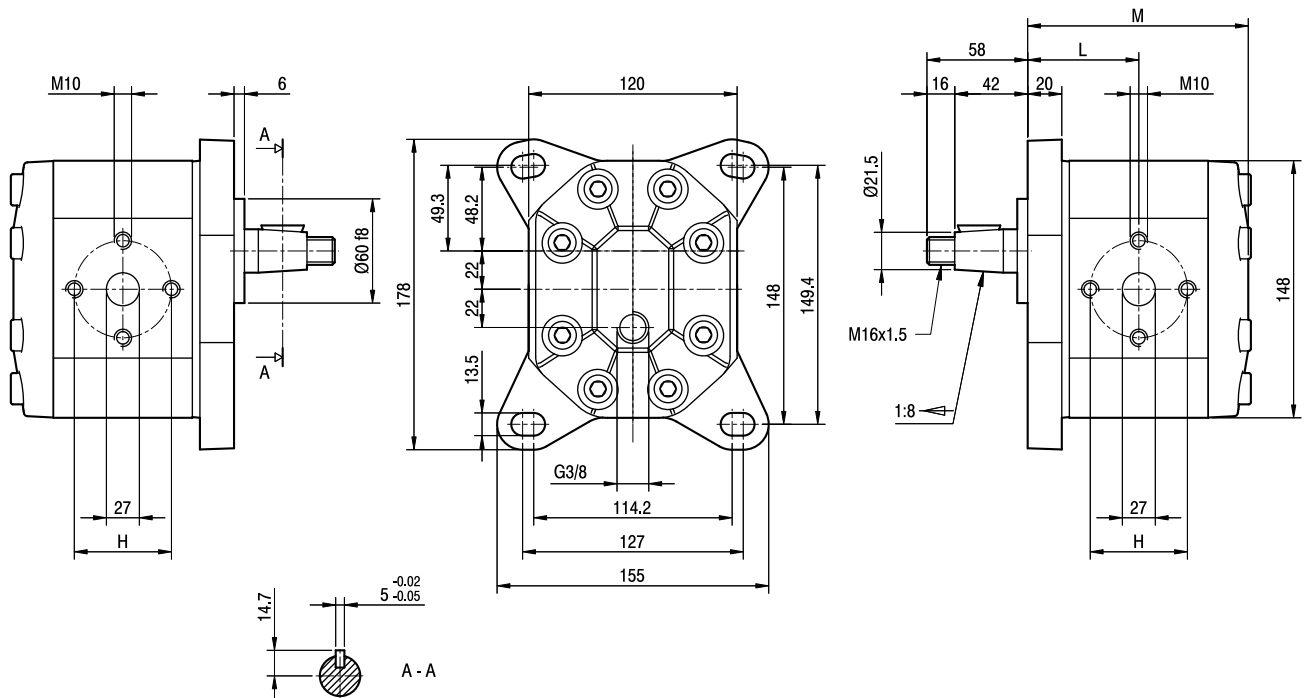


GHM35

Parti accessorie a corredo del motore standard: linguetta a disco (codice 522060), dado M16x1.5 (codice 523018), rosetta elastica spaccata (codice 523007).
 Porte standard: filetti M10 profondità utile 19 mm.
 Drenaggio G 3/8 profondità utile 15 mm.

Accessories supplied with the standard motor: woodruff key (code 522060), M16x1.5 hexagonal nut (code 523018), washer (code 523007).
 Standard ports: M10 threads depth 19 mm.
 G 3/8 drain port thread depth 15 mm.



TIPO TYPE	CILINDRATA DISPLACEMENT	PORTATA a 1500 giri/min FLOW at 1500 rev/min	PRESSIONI MASSIME MAX PRESSURE			VELOCITÀ MASSIMA MAX SPEED	DIMENSIONI DIMENSIONS			
			P _I	P _C	P _P		L	M	d	H
	cm ³ /giro (cm ³ /rev)	litri/min (litres/min)	bar	bar	bar	giri/min (rpm)	mm	mm	mm	mm
GHM35-R-66-E1	44	62	250	240	265	2800	72	143	27	51
GHM35-R-80-E1	52	74	230	220	245	2400	75	149	27	56
GHM35-R-94-E1	61	87	210	200	225	2800	78	155	33	62
GHM35-R-110-E1	71	101	200	190	215	2500	81,5	162	33	62
GHM35-R-120-E1	78	112	180	170	195	2300	84	167	33	62
GHM35-R-135-E1	87	124	160	150	175	2000	87	173	33	62