

GHM3A2

Parti accessorie a corredo del motore standard: linguetta (codice 522068).

Monta flangia 82-2 (A) secondo norma SAE J744c.

Filetto 1/4-28 UNF profondità utile 20 mm

Porte standard: filetti 3/8-16 UNC profondità utile 19 mm, filetti 7/16-14 UNC profondità utile 19 mm.

Drenaggio G3/8 profondità utile 15 mm.

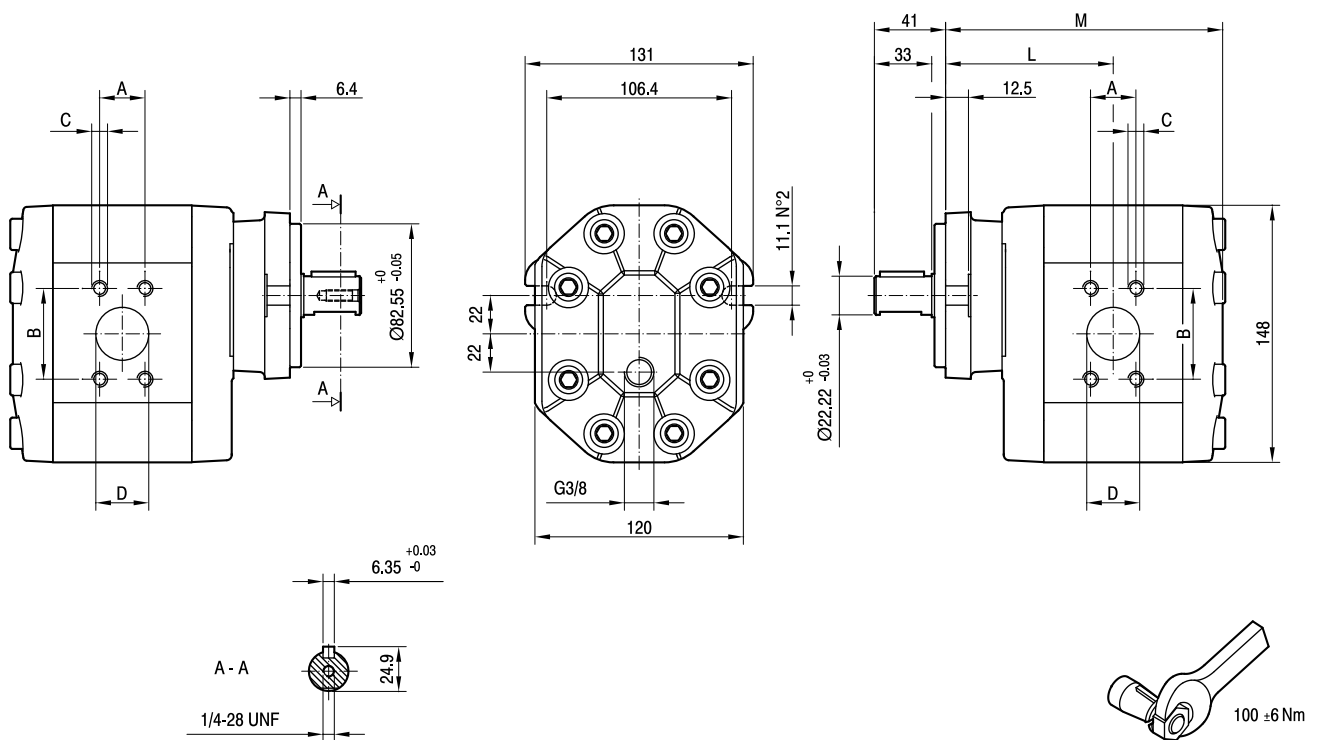
Accessories supplied with the standard motor: key (code 522068).

Mounting flange 82-2 (A) in compliance with SAE J744c.

1/4-28 UNF thread depth 20 mm.

Standard ports: 3/8-16 UNC threads depth 19 mm, 7/16-14 UNC threads depth 19 mm.

G3/8 drain port thread depth 15 mm.



TIPO TYPE	CILINDRATA DISPLACEMENT	PORTATA a 1500 giri/min FLOW at 1500 rev/min	PRESSIONI MASSIME MAX PRESSURE			VELOCITÀ MASSIMA MAX SPEED	DIMENSIONI DIMENSIONS					
			P _I	P _C	P _P		L	M	A	B	C	D
	cm ³ /giro [cm ³ /rev]	litri/min [litres/min]	bar	bar	bar	giri/min [rpm]	mm	mm	mm	mm	UNC	mm
GHM3A2-R-33-E1	22	31	280	270	295	3500	97	160,5	26,19	52,37	3/8	27
GHM3A2-R-40-E1	26	37	280	270	295	3300	98,5	163,5	26,19	52,37	3/8	27
GHM3A2-R-50-E1	33	48	270	260	285	3300	101	168,5	26,19	52,37	3/8	27
GHM3A2-R-60-E1	39	56	260	250	275	3000	103	172,5	26,19	52,37	3/8	27
GHM3A2-R-66-E1	44	62	250	240	265	2800	104,5	175,5	26,19	52,37	3/8	27
GHM3A2-R-80-E1	52	74	230	220	245	2500	107,5	181,5	26,19	52,37	3/8	27
GHM3A2-R-94-E1	61	87	210	200	225	2800	110,5	187,5	30,2	58,7	7/16	33
GHM3A2-R-110-E1	71	101	200	190	215	2500	114	194,5	30,2	58,7	7/16	33
GHM3A2-R-120-E1	78	112	180	170	195	2300	116,5	199,5	30,2	58,7	7/16	33
GHM3A2-R-135-E1	87	124	160	150	175	2000	119,5	205,5	30,2	58,7	7/16	33