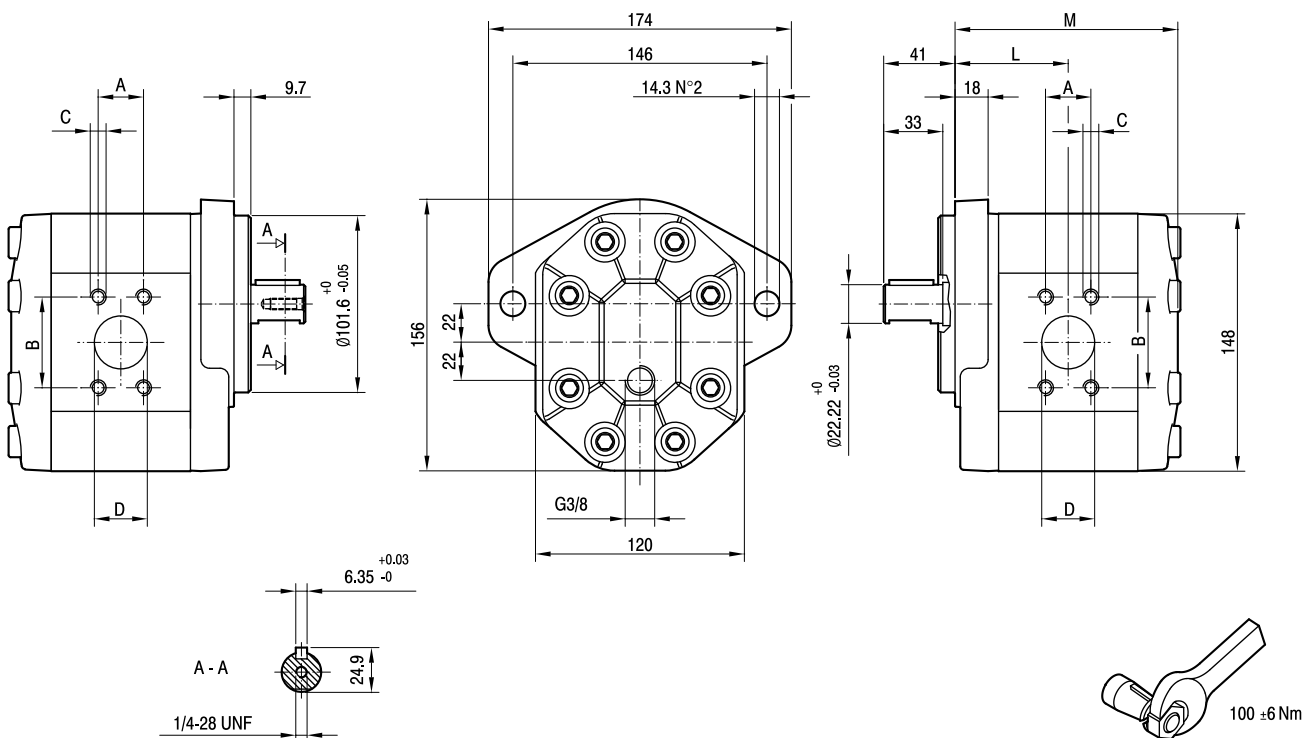


GHM3A

Parti accessorie a corredo del motore standard: linguetta (codice 522068).
 Monta flangia 101-2 (B) secondo norma SAE J744c.
 Filetto 1/4-28 UNF profondità utile 20 mm.
 Porte standard: filetti 3/8-16 UNC profondità utile 19 mm, filetti 7/16-14 UNC profondità utile 19 mm.
 Drenaggio G3/8 profondità utile 15 mm.

Accessories supplied with the standard motor: key (code 522068).
 Mounting flange 101-2 (B) in compliance with SAE J744c.
 1/4-28 UNF thread depth 20 mm.
 Standard ports: 3/8-16 UNC threads depth 19 mm, 7/16-14 UNC threads depth 19 mm.
 G3/8 drain port thread depth 15 mm.



TIPO TYPE	CILINDRATA DISPLACEMENT	PORTATA a 1500 giri/min FLOW at 1500 rev/min	PRESSIONI MASSIME MAX PRESSURE			VELOCITÀ MASSIMA MAX SPEED	DIMENSIONI DIMENSIONS					
			P _I	P _C	P _P		L	M	A	B	C	D
	cm ³ /giro [cm ³ /rev]	litri/min [litres/min]	bar	bar	bar	giri/min [rpm]	mm	mm	mm	mm	UNC	mm
GHM3A-R-33-E1	22	31	280	270	295	3500	65,5	129	26,19	52,37	3/8	27
GHM3A-R-40-E1	26	37	280	270	295	3300	67	132	26,19	52,37	3/8	27
GHM3A-R-50-E1	33	48	270	260	285	3300	69,5	137	26,19	52,37	3/8	27
GHM3A-R-60-E1	39	56	260	250	275	3000	71,5	141	26,19	52,37	3/8	27
GHM3A-R-66-E1	44	62	250	240	265	2800	73	144	26,19	52,37	3/8	27
GHM3A-R-80-E1	52	74	230	220	245	2500	76	150	26,19	52,37	3/8	27
GHM3A-R-94-E1	61	87	210	200	225	2800	79	156	30,2	58,7	7/16	33
GHM3A-R-110-E1	71	101	200	190	215	2500	82,5	163	30,2	58,7	7/16	33
GHM3A-R-120-E1	78	112	180	170	195	2300	85	168	30,2	58,7	7/16	33
GHM3A-R-135-E1	87	124	160	150	175	2000	88	174	30,2	58,7	7/16	33