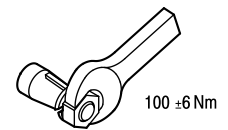
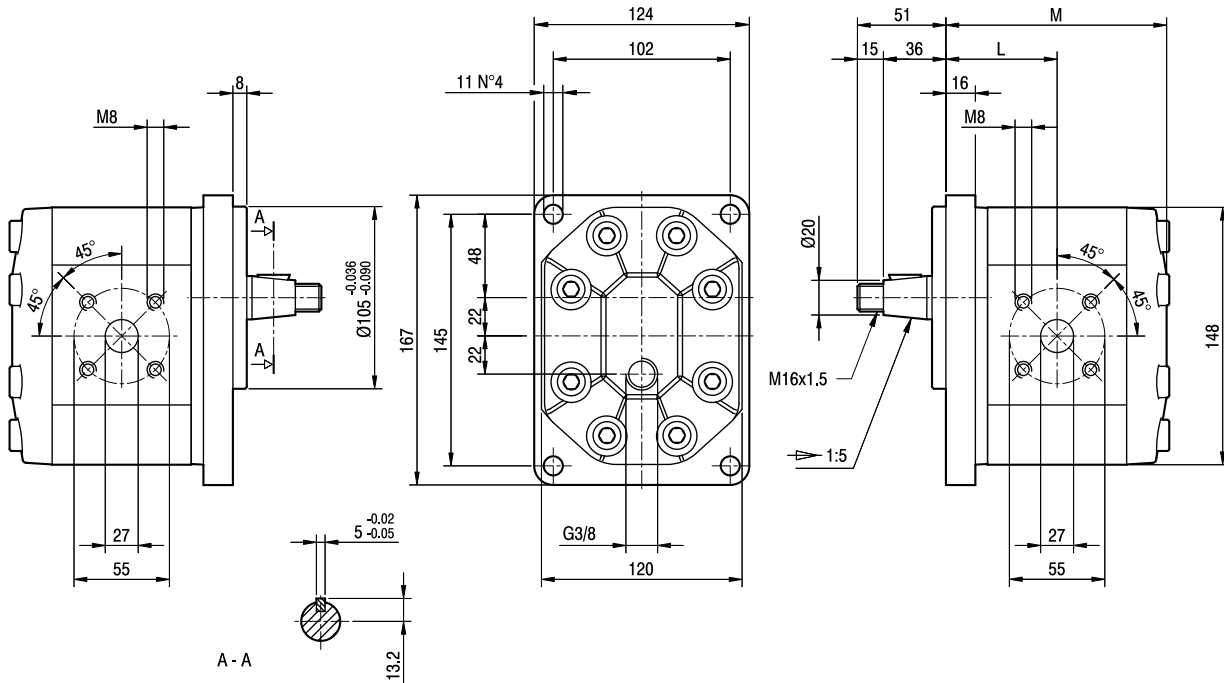


GHM3BK1

Parti accessorie a corredo del motore standard: linguetta a disco (codice 522060), dado M16x1.5 (codice 523018), rosetta elastica spaccata (codice 523007).
 Porte standard: filetti M8 profondità utile 17 mm.
 Drenaggio G 3/8 profondità utile 15 mm.

Accessories supplied with the standard motor: woodruff key (code 522060), M16x1.5 hexagonal nut (code 523018), washer (code 523007).
 Standard ports: M8 threads depth 17 mm.
 G 3/8 drain port thread depth 15 mm.



TIPO TYPE	CILINDRATA DISPLACEMENT	PORTATA a 1500 giri/min FLOW at 1500 rev/min	PRESSIONI MASSIME MAX PRESSURE			VELOCITÀ MASSIMA MAX SPEED	DIMENSIONI DIMENSIONS	
			P _I	P _C	P _P		L	M
	cm ³ /giro [cm ³ /rev]	litri/min [litres/min]	bar	bar	bar	giri/min [rpm]	mm	mm
GHM3BK1 R-33-E1	22	31	280	270	295	3500	64,5	128
GHM3BK1 R-40-E1	26	37	280	270	295	3000	66	131
GHM3BK1 R-50-E1	33	48	270	260	285	3000	68,5	136
GHM3BK1 R-60-E1	39	56	260	250	275	3000	70,5	140
GHM3BK1 R-66-E1	44	62	250	240	265	2800	72	143
GHM3BK1 R-80-E1	52	74	230	220	245	2400	75	149