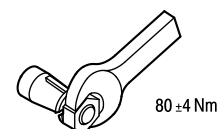
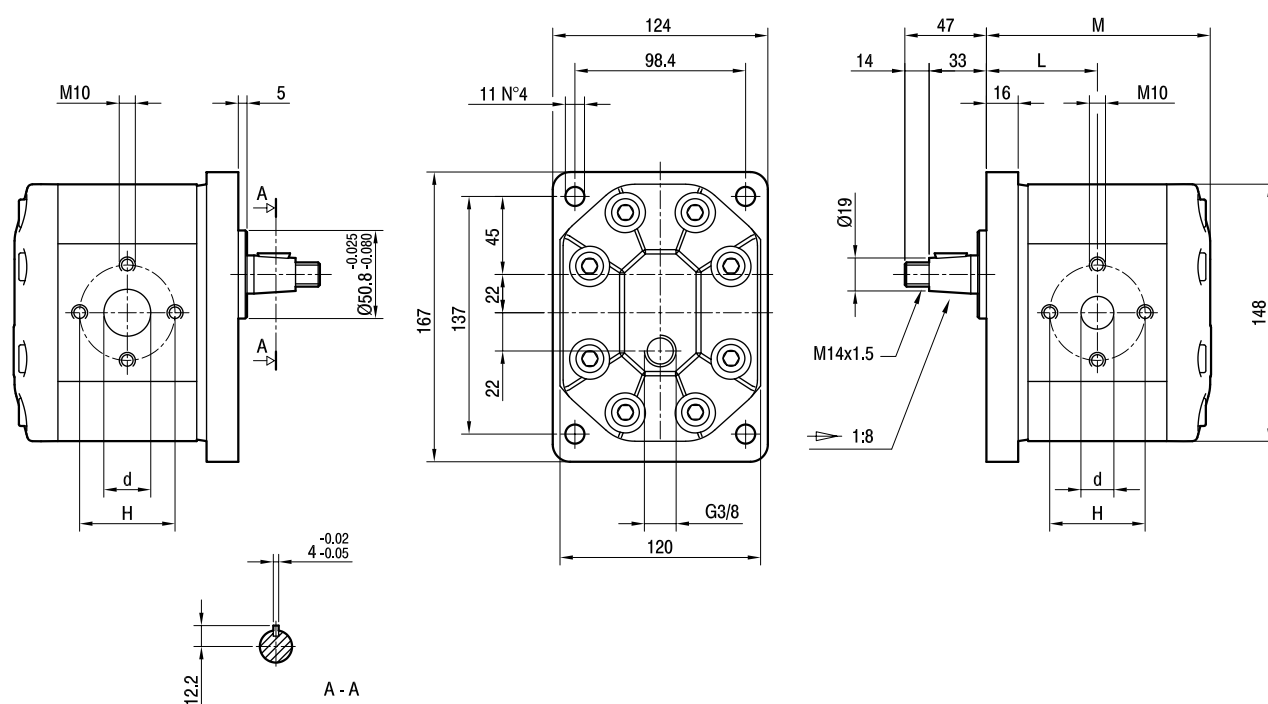


# GHM3FL

Parti accessorie a corredo del motore standard: linguetta a disco (codice 522058), dado M14x1.5 (codice 523017), rosetta elastica spaccata (codice 523006).  
 Porte standard: filetti M10 profondità utile 19 mm.  
 Drenaggio G3/8 profondità utile 15 mm.

Accessories supplied with the standard motor: woodruff key (code 522058), M14x1.5 exagonal nut (code 523017), washer (code 523006).  
 Standard ports: M10 threads depth 19 mm.  
 G3/8 drain port thread depth 15 mm.



TIPO TYPE	CILINDRATA DISPLACEMENT	PORTATA a 1500 giri/min FLOW at 1500 rev/min	PRESSIONI MASSIME MAX PRESSURE			VELOCITÀ MASSIMA MAX SPEED	DIMENSIONI DIMENSIONS			
			P <sub>1</sub>	P <sub>C</sub>	P <sub>p</sub>		L	M	d	H
	cm <sup>3</sup> /giro [cm <sup>3</sup> /rev]	litri/min [litres/min]	bar	bar	bar	giri/min [rpm]	mm	mm	mm	mm
GHM3FL-R-33-E1	22	31	280	270	295	3500	64.5	128	27	56
GHM3FL-R-40-E1	26	37	280	270	295	3000	66	131	27	56
GHM3FL-R-50-E1	33	48	270	260	285	3000	68,5	136	27	56
GHM3FL-R-60-E1	39	56	260	250	275	3000	70,5	140	27	56
GHM3FL-R-66-E1	44	62	250	240	265	2800	72	143	27	51
GHM3FL-R-80-E1	52	74	230	220	245	2400	75	149	27	56
GHM3FL-R-94-E1	61	87	210	200	225	2800	78	155	33	62
GHM3FL-R-110-E1	71	101	200	190	215	2500	81,5	162	33	62
GHM3FL-R-120-E1	78	112	180	170	195	2300	84	167	33	62
GHM3FL-R-135-E1	87	124	160	150	175	2000	87	173	33	62