

GHP2A-KA

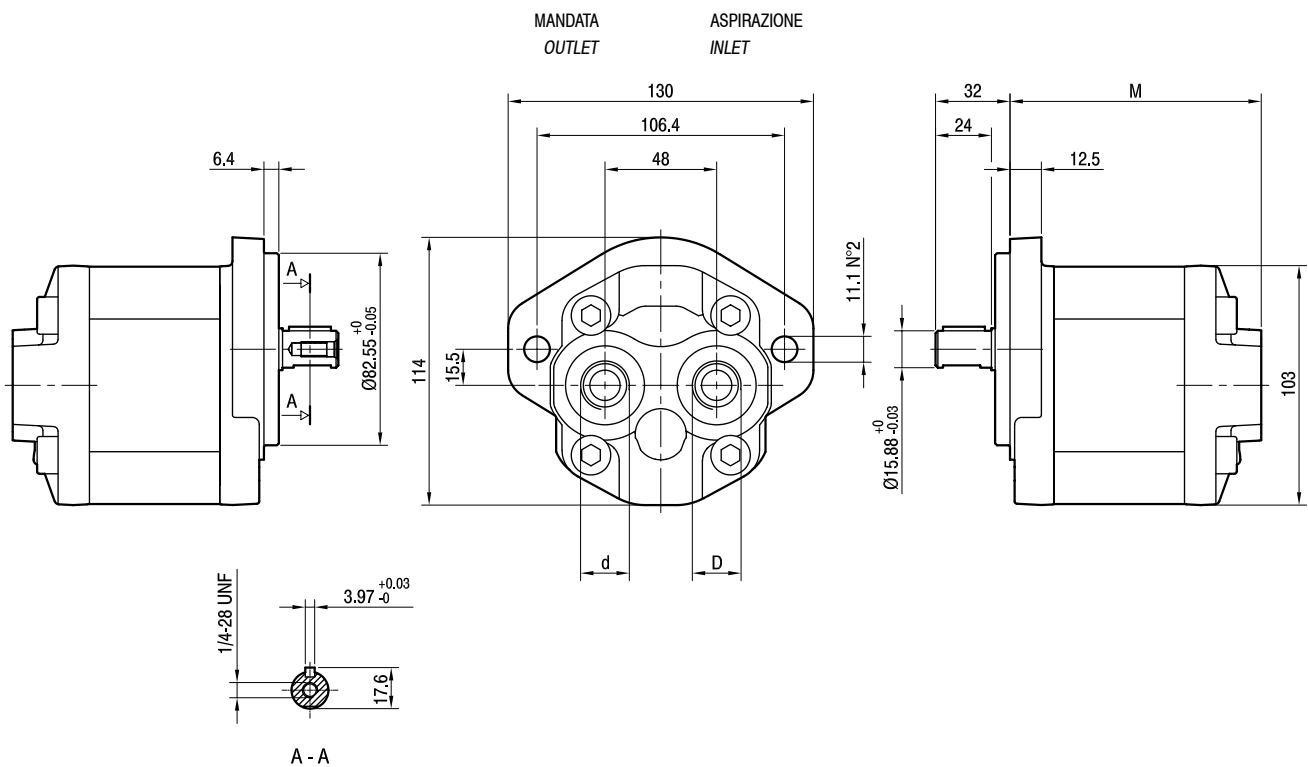
Parti accessorie a corredo della pompa standard: linguetta (codice 522067).
 Monta flangia 82-2 (A) secondo norma SAE J774c.

Le porte standard di aspirazione e mandata sono lavorate secondo la specifica SAE J1926/1 (ISO 11926-1) relativa a porte filettate con tenuta O-ring.

Accessories supplied with the standard pump: key (code 522067).

Mounting flange 82-2 (A) in compliance With SAE J774c.

Inlet and outlet standard ports are machined in compliance with threaded port with O-ring seal in truncated housing SAE J1926/1 (ISO 11926-1).



TIPO TYPE	CILINDRATA DISPLACEMENT	PORTATA a 1500 giri/min FLOW at 1500 rev/min	PRESSIONI MASSIME MAX PRESSURE			VELOCITÀ MASSIMA MAX SPEED	DIMENSIONI DIMENSIONS		
			P ₁	P ₂	P ₃		M	d	D
	cm ³ /giro [cm ³ /rev]	litri/min [litres/min]	bar	bar	bar	giri/min [rpm]	mm	mm	mm
GHP2A-D-6-KA	4,5	6,4	280	295	310	4000	105	7/8-14 UNF	1 1/16-12 UNF
GHP2A-D-9-KA	6,4	9,1	280	295	310	4000	108	7/8-14 UNF	1 1/16-12 UNF
GHP2A-D-10-KA	7,0	10,0	280	295	310	4000	109	7/8-14 UNF	1 1/16-12 UNF
GHP2A-D-12-KA	8,3	11,8	280	295	310	4000	111	7/8-14 UNF	1 1/16-12 UNF
GHP2A-D-13-KA	9,6	13,7	280	295	310	4000	113	7/8-14 UNF	1 1/16-12 UNF
GHP2A-D-16-KA	11,5	16,4	280	295	310	4000	116	7/8-14 UNF	1 1/16-12 UNF
GHP2A-D-20-KA	14,1	20,1	260	275	290	3200	120	7/8-14 UNF	1 1/16-12 UNF
GHP2A-D-22-KA	16,0	22,8	260	275	290	2800	123	7/8-14 UNF	1 1/16-12 UNF
GHP2A-D-25-KA	17,9	25,5	260	275	290	2500	126	7/8-14 UNF	1 1/16-12 UNF
GHP2A-D-30-KA	21,1	30,1	230	245	260	2200	131	7/8-14 UNF	1 1/16-12 UNF
GHP2A-D-34-KA	23,7	33,7	230	245	260	2000	135	7/8-14 UNF	1 1/16-12 UNF
GHP2A-D-37-KA	25,5	36,4	210	225	240	1800	138	7/8-14 UNF	1 1/16-12 UNF
GHP2A-D-40-KA	28,2	40,1	200	215	230	1800	142	7/8-14 UNF	1 1/16-12 UNF
GHP2A-D-50-KA	35,2	50,2	160	175	190	1800	153	7/8-14 UNF	1 1/16-12 UNF