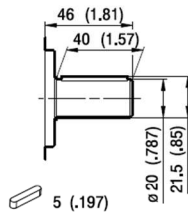
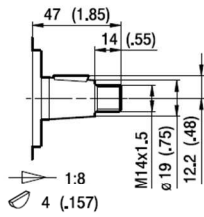
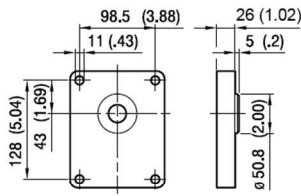


**FLANGE / FLANGES**

**ALBERI / SHAFTS**

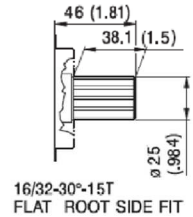
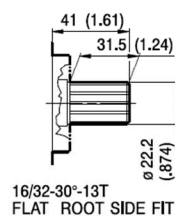
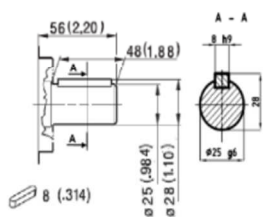
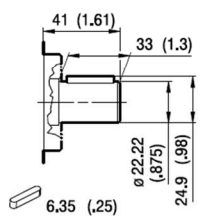
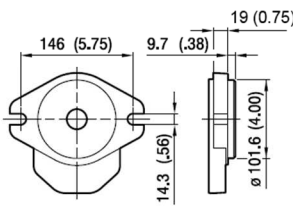


**T0**

Coppia Max  
Max Torque 280 Nm

**C0**

Coppia Max  
Max Torque 265 Nm



**C1**

Coppia Max  
Max Torque 295 Nm

**C3**

Coppia Max  
Max Torque 380 Nm

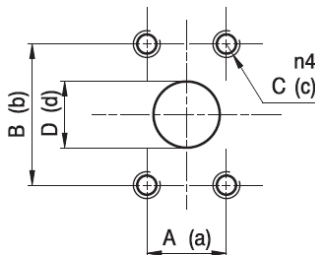
**S1**

Coppia Max  
Max Torque 405 Nm

**S2**

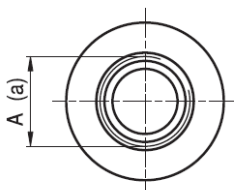
Coppia Max  
Max Torque 660 Nm

**PORTE / PORTS**



**A**

TYPE	INLET	OUTLET*
	A	B
ELI3..20.4 / 26.3	1 5/16 - 12 UN - 2B	1 1/16 - UN - 2B
ELI3..33.3 / 43.2	1 5/8 - 12 UN - 2B	1 1/16 - UN - 2B
ELI3..52.0 / 87.1	1 7/8 - 12 UN - 2B	1 5/16 - UN - 2B



STANDARD SAE J1926/1  
ONLY FOR INLET PORTS

**FA**

TYPE	INLET			OUTLET		
	D	H/H'	C	d	h/h'	c
ELI3..20.4 / 26.3	25	26.2 / 52.4	M10	19	22.2 / 47.6	M10
ELI3..33.3 / 43.2	31.5	30.2 / 58.7	M10	25	26.2 / 52.4	M10
ELI3..52.0 / 64.3	31.5	30.2 / 58.7	M10	31.5	30.2 / 58.7	M10
ELI3..70.7 / 87.1	38	69.9 / 35.7	M12	31.5	30.2 / 58.7	M10

\* With thread ports a reduction of body fatigue strength may occur if the pump is working at elevated and intermittent pressures. For further details please contact our Sales and Technical Dept. we suggest to provide application specification through our PID form.

